



**METAL TECHNOLOGY**  
GROUP



# CERAMIC AND FOOD INDUSTRY



# ROLLS FOR CLAY MILLING MACHINES

## TECHNICAL DATA:

### Dimensions:

from  $\varnothing 450$  mm x L=450 mm  
up to  $\varnothing 1200$  mm x L=1000 mm

### Single weight:

from 200 kg up to 3500 kg

### Thickness of the chilled layer:

from 15 mm up to 60 mm

### Hardness of the chilled layer:

HV20=500 $\pm$ 30

HV20=550 $\pm$ 30

HV20=600 $\pm$ 30

## MATERIAL:

**External layer:** alloyed,  
wear-resistant chilled cast iron

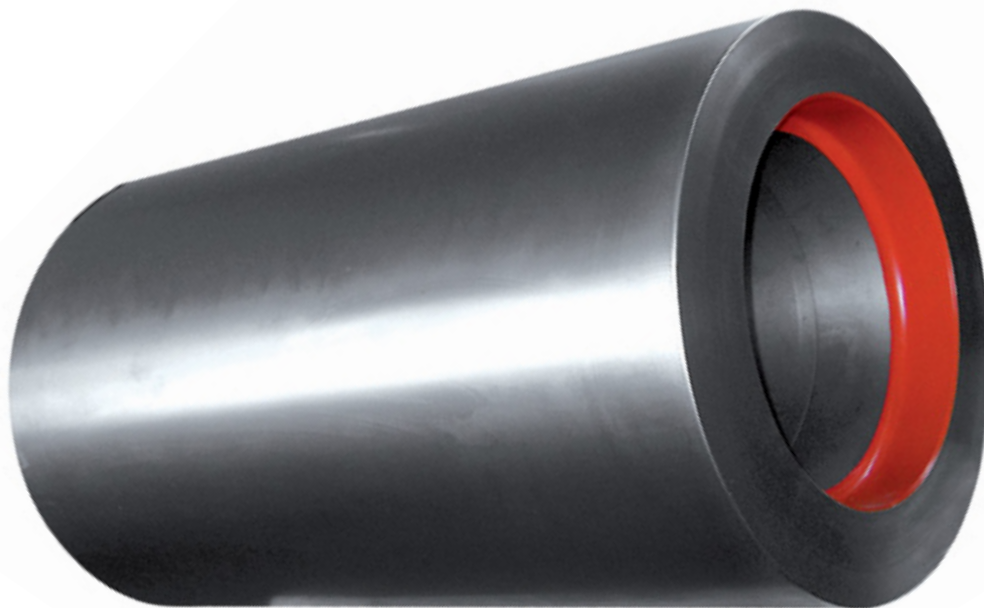
**Internal layer:** gray cast iron

**External layer:** alloyed,  
wear-resistant ductile iron

**Internal layer:** ductile iron

## BASIC TYPES / SIZES $\varnothing$ x L (mm)

$\varnothing$ 450x450	$\varnothing$ 800x400	$\varnothing$ 810x300	$\varnothing$ 1000x500	$\varnothing$ 1020x600
$\varnothing$ 500x500	$\varnothing$ 800x420	$\varnothing$ 820x800	$\varnothing$ 1000x600	$\varnothing$ 1020x800
$\varnothing$ 600x310	$\varnothing$ 800x500	$\varnothing$ 900x650	$\varnothing$ 1000x630	$\varnothing$ 1020x1000
$\varnothing$ 600x500	$\varnothing$ 800x600		$\varnothing$ 1000x650	$\varnothing$ 1100x1000
$\varnothing$ 630x600	$\varnothing$ 800x630		$\varnothing$ 1000x700	$\varnothing$ 1100x1100
$\varnothing$ 630x1000	$\varnothing$ 800x650		$\varnothing$ 1000x750	$\varnothing$ 1200x900
$\varnothing$ 750x600	$\varnothing$ 800x800		$\varnothing$ 1000x800	$\varnothing$ 1200x1000
$\varnothing$ 750x800	$\varnothing$ 800x1000		$\varnothing$ 1000x1000	
	$\varnothing$ 800x1200		$\varnothing$ 1000x1200	



# ROLLS FOR FOOD AND DYEING INDUSTRY

## TECHNICAL DATA:

### Dimensions:

from  $\varnothing 180$  mm x L=450 mm up to  $\varnothing 600$  mm

Length: from L=600 mm up to 1900 mm

Single weight: from 80 kg up to 2240 kg

Thickness of the chilled layer:

from 20 mm up to 50 mm

Hardness of the chilled layer:

from HV 480 up to HV 560

## MATERIAL:

External layer: alloyed,  
wear-resistant chilled cast iron

Internal layer: gray cast iron



## BASIC TYPES / SIZES $\varnothing$ x L (mm)

$\varnothing$ 200x600	$\varnothing$ 220x500	$\varnothing$ 250x600	$\varnothing$ 300x1250	$\varnothing$ 400x1161	$\varnothing$ 406x914
$\varnothing$ 200x640	$\varnothing$ 220x700	$\varnothing$ 250x800	$\varnothing$ 304.80 x 1828.80 (12" x 72")	$\varnothing$ 400x1200	$\varnothing$ 406.78 x 1016.762
$\varnothing$ 200x700	$\varnothing$ 220x800	$\varnothing$ 250x1000	$\varnothing$ 350x1200	$\varnothing$ 400x1371	$\varnothing$ 422x601
$\varnothing$ 200x800	$\varnothing$ 220x1000	$\varnothing$ 250x1200	$\varnothing$ 355.60 x 1828.80 (14" x 72")	$\varnothing$ 400x1875	$\varnothing$ 457x914
$\varnothing$ 200x1000	$\varnothing$ 220x1200	$\varnothing$ 250x1250		$\varnothing$ 400x1896	$\varnothing$ 508x725
$\varnothing$ 200x1200	$\varnothing$ 220x1250	$\varnothing$ 250x1500			$\varnothing$ 508x1016
					$\varnothing$ 601x1302

[www.MTGBG.com](http://www.MTGBG.com)