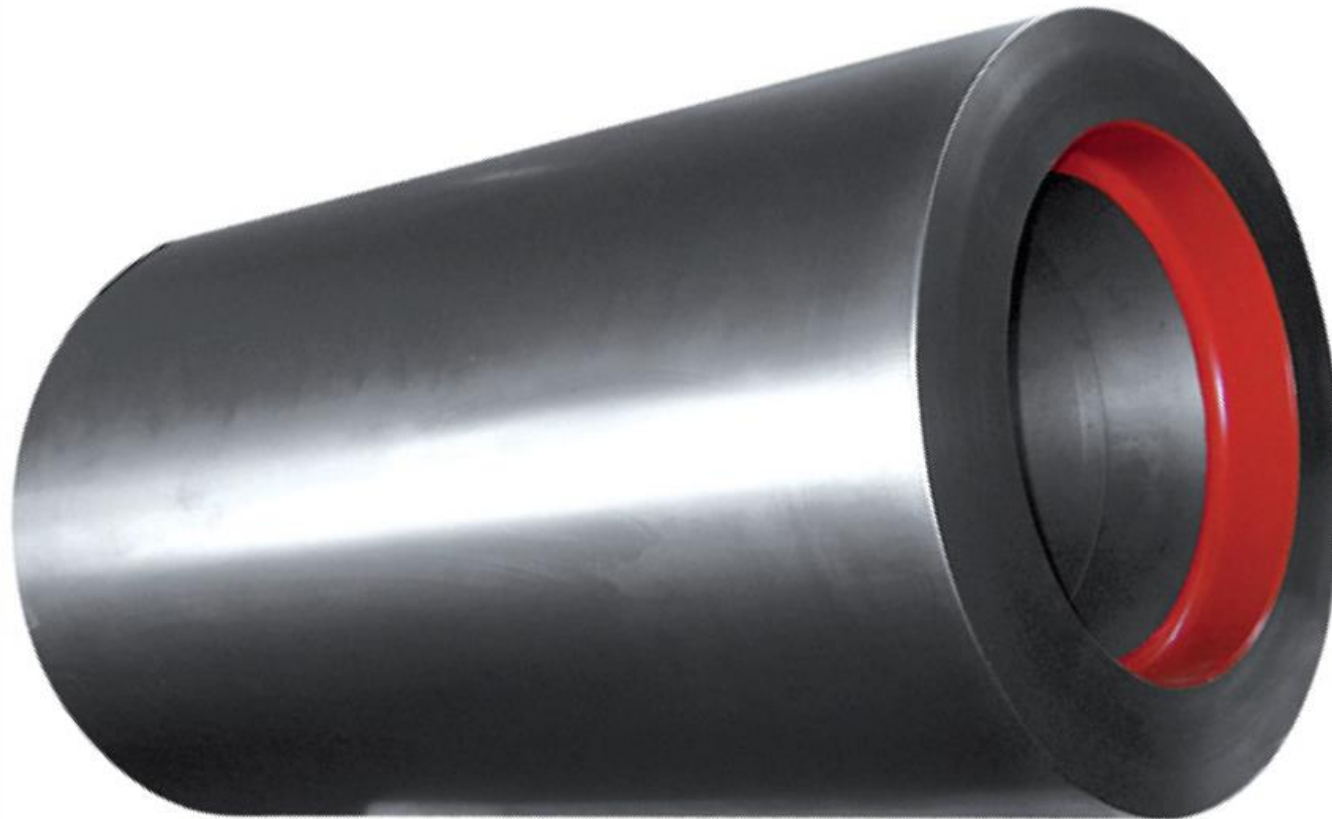
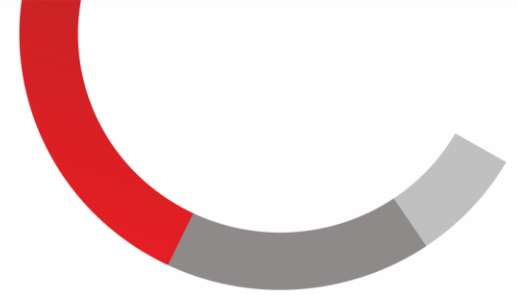


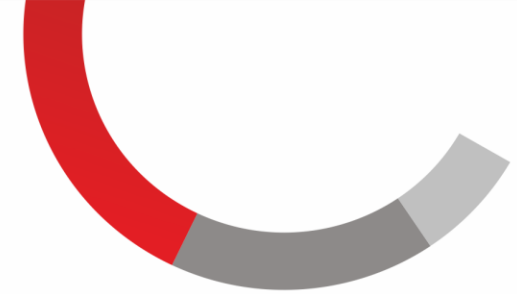
# CERAMIC AND FOOD INDUSTRY

ONE GROUP  
MANY POSSIBILITIES



ROLLS FOR CLAY MILLING MACHINES





## ROLLS FOR CLAY MILLING MACHINES

### TECHNICAL DATA:

**Dimensions:**

from  $\varnothing 450$  mm x L=450 mm  
up to  $\varnothing 1200$  mm x L=1000 mm

**Single weight:**

from 200 kg up to 4500 kg

**Thickness of the chilled layer:**

from 15 mm up to 60 mm

**Hardness of the chilled layer:**

HV20=500 $\pm$ 30

HV20=550 $\pm$ 30

HV20=600 $\pm$ 30

### MATERIAL:

**External layer:** alloyed,  
wear-resistant chilled cast iron

**Internal layer:** gray cast iron

**External layer:** alloyed,  
wear-resistant ductile iron

**Internal layer:** ductile iron

### BASIC TYPES / SIZES $\varnothing$ x L (mm)

$\varnothing$ 450x450	$\varnothing$ 800x400	$\varnothing$ 810x300	$\varnothing$ 1000x500	$\varnothing$ 1020x600
$\varnothing$ 500x500	$\varnothing$ 800x420	$\varnothing$ 820x800	$\varnothing$ 1000x600	$\varnothing$ 1020x800
$\varnothing$ 600x310	$\varnothing$ 800x500	$\varnothing$ 900x650	$\varnothing$ 1000x630	$\varnothing$ 1020x1000
$\varnothing$ 600x500	$\varnothing$ 800x600		$\varnothing$ 1000x650	$\varnothing$ 1100x1000
$\varnothing$ 630x600	$\varnothing$ 800x630		$\varnothing$ 1000x700	$\varnothing$ 1100x1100
$\varnothing$ 630x1000	$\varnothing$ 800x650		$\varnothing$ 1000x750	$\varnothing$ 1200x900
$\varnothing$ 750x600	$\varnothing$ 800x800		$\varnothing$ 1000x800	$\varnothing$ 1200x1000
$\varnothing$ 750x800	$\varnothing$ 800x1000		$\varnothing$ 1000x1000	
	$\varnothing$ 800x1200		$\varnothing$ 1000x1200	$\varnothing$ 1000x1500

## ROLLS FOR FOOD AND DYEING INDUSTRY

### TECHNICAL DATA:

**Dimensions:**

from  $\varnothing 180$  mm  $\times$  L=450 mm up to  $\varnothing 600$  mm

Length: from L=600 mm up to 1900 mm

Single weight: from 80 kg up to 2240 kg

**Thickness of the chilled layer:**

from 20 mm up to 50 mm

**Hardness of the chilled layer:**

from HV 480 up to HV 560

### MATERIAL:

External layer: alloyed,  
wear-resistant chilled cast iron

Internal layer: gray cast iron





## ROLLS FOR FOOD AND DYEING INDUSTRY

### BASIC TYPES / SIZES Ø x L (mm)

Ø 200x600	Ø 220x500	Ø 250x600	Ø 300x1250	Ø 400x1161	Ø 406x914
Ø 200x640	Ø 220x700	Ø 250x800	Ø 304.80 x 1828.80 (12" x 72")	Ø 400x1200	Ø 406.78 x 1016.762
Ø 200x700	Ø 220x800	Ø 250x1000	Ø 350x1200	Ø 400x1371	Ø 422x601
Ø 200x800	Ø 220x1000	Ø 250x1200	Ø 355.60 x 1828.80 (14" x 72")	Ø 400x1875	Ø 457x914
Ø 200x1000	Ø 220x1200	Ø 250x1250		Ø 400x1896	Ø 508x725
Ø 200x1200	Ø 220x1250	Ø 250x1500			Ø 508x1016
					Ø 601x1302



[mtgbg.com](http://mtgbg.com)

## **Metal Technology Group AD**

Bulgaria, 1404 Sofia, 18, Bokar

Tel +359 2 818 5959 Fax: +359 2 818 5949 E-mail [sales@mtgbg.com](mailto:sales@mtgbg.com)